



SDT ULTRASOUND SOLUTIONS **PRODUCT CATALOG**

SDTUS.COM



WHY ULTRASOUND?

For millennia, humans relied upon a keen sense of hearing to alert us of danger, and today that same attribute warns us when our assets are about to fail. The earliest indication of a change in an asset's condition is discovered in the ultrasonic domain, no matter how subtle those changes might be. Ultrasound senses micro-sonic changes in an asset's function, allowing us to anticipate failures and plan maintenance interventions.

At SDT Ultrasound Solutions, we enable our customers to achieve their operational objectives by improving the reliability of their assets.

We have supported industry with our advanced ultrasound solutions for nearly 50 years; Promoting more reliable, sustainable, and safe manufacturing processes and empowering maintenance and reliability teams to better understand the health of their most critical production assets.

SDT's Ultrasound Condition Monitoring, Vibration Analysis, and Acoustic Imaging Devices foresee production asset failures, eliminate energy waste, and improve profitability.





MECHANICAL



LEAKS



LUBRICATION



ELECTRICAL



VALVES



STEAM



HYDRAULICS



TIGHTNESS

ULTRASOUND IS RELIABILITY'S FIRST LINE OF DEFENSE

Ultrasound's hyper-sensitivity towards friction, impacting and turbulence not only gives it leading detection capabilities as a condition monitoring technology - but also allows for extreme versatility in detecting a wide range of defects across a number of different asset classes.

The accuracy & repeatability of SDT's Ultrasound Data Collectors is why we're trusted by the world's most reliable companies.

Monitor all **8 - Pillars of Ultrasound**: Mechanical Condition Monitoring, Precision Lubrication, Compressed Air & Gas Leak Detection, Steam Trap & Valve Testing, Electrical System Inspection, Tightness Testing, and Hydraulic System Fault Detection.



Contents

SDT SOLUTIONS

SDT Kits	6 – 11
LUBExpert Systems	8 – 9
ULTRAChecker Range	10 – 11
SonaVu+ Systems	12 – 13
ULTRASentry Systems	13
Vigilant Monitoring Systems	14 – 15
SDT200 / SDT270 Kits	15 – 17
SHERLOG Marine Systems	18 – 19

SOFTWARE

Ultranalysis Suite (UAS3)	19
---------------------------------	----

TRAINING & SUPPORT

SDT Training & Certification	20 – 21
On-site Support & Mentoring	21

HARDWARE

COMMONSense Sensors & Cables	22 – 25
SDT Sensors, Cables & Accessories	26 – 47
– Contact, Airborne, Accelerometers	
– Cables (IP50/IP65 Rated)	
– Junction Boxes	
– Audio and Mounting Accessories	
– Sensor Extensions, Needle Extensions	
– Carrying Cases	

CALIBRATION

Calibration Services & Lifetime Warranty	58 – 61
--	---------

COMPANY INFORMATION

Contact & Warranty Info	62 – 63
About SDT	63
Index	64

SDT KITS



SDT340



SDT340 Pro 3 System

FS.R340.PU3

SDT340 System w/ UAS3, ULTRAsense, RS2T, 10.8" RS2N, FLEX2, AC1, SDT930 Case, Device Holster, Bearing Toolbox and Accessories

SDT340



SDT340 Base System

FS.R340.SYS

SDT340 w/ Battery, Charger, Headphones, Cable, ULTRASense, SDT930 Case and Accessories



SDT340 Pro Lite System

FS.R340.PLT

SDT340 System w/ UAS Lite, ULTRASense, RS2T, 10.8" RS2N, FLEX2, AC1, SDT930 Case and Accessories



SDT340 Pro NSW System

FS.R340.PU3-NSW

SDT340 System w/ UAS3, ULTRASense, RS2T, 10.8" RS2N, FLEX2, AC1, SDT930 Case, Device Holster, Bearing Toolbox and Accessories

LUBExpert



LUBExpert Base System

FS.LBX.003-02

LUBExpert Base w/ LUBEsense1, Cradle, Device Holster and Accessories, Requires Existing UAS3 Master License



LUBExpert Static System

FS.LBX.003

LUBExpert Static w/ LUBExpert Essentials, UAS3 Master, LUBEsense1, Cradle, Device Holster, Bearing Toolbox and Accessories



LUBExpert Dynamic System

FS.LBX.006

LUBExpert Dynamic w/ LUBExpert Essentials, UAS3 Master, LUBEsense1, Cradle, Device Holster, Bearing Toolbox and Accessories



SDT LUBExpert On-Guard Permanent System

FS.SRL.000-01

LUBExpert On-Guard system w/ 8 Channels, Includes ON-Guard Module, Software, 4-20 True COMMONSense Sensors, Automatic Lubrication Drives and Cables

**Coated Steel Enclosure (FU.SRL.ENC.001-01) Must be Purchased Separately*

**Refer to page 60 for other part numbers*



SDT LUBExpert On-Guard Mobility System

FS.SRL.DUM.001-02

LUBExpert On-Guard Mobility System w/ 4 Channels, Includes On-Guard Module, Software, 4-20 True COMMONSense Sensors, Automatic Lubrication Drives, Accessories and Custom Carrying case

ULTRAChecker

SDT ULTRAChecker Pro System

FS.ULC.002-01

ULTRAChecker w/ RS2T,
ULTRASense, FLEX2,
Lube Adapter and Accessories



SDT ULTRAChecker System

FS.ULC.001-01

ULTRAChecker w/ RS2T, ULTRASense and Accessories



SDT ULTRAChecker PD System

FS.ULC.003-01

ULTRAChecker w/ RS2T, ULTRASense, T-Sonic 1, ParaDish2,
and Accessories

Checker Range

Application-Based



SDT LUBEChecker System

FS.LBC.001-02

LUBEChecker w/ LUBEsense1, Cradles and Accessories



SDT TRAPChecker System

FS.TPC.001-02

TRAPChecker w/ 3.2" RS2N and Accessories



SDT TIGHTChecker System

FS.TIC1.001-01

TIGHTChecker w/ FLEX2, T-Sonic1 and Accessories



SDT LEAKChecker System

FS.LKC.001-01

LEAKChecker w/ Accessories



SDT HATCHChecker System

FS.HTCH.001-01

HATCHChecker w/ FLEX2, T-Sonic9 and Accessories



SDT SonaVu Plus Ultra System

FS.SVU.PULC.001

SDT SonaVu Plus w/ ULTRAChecker,
Headphones and Accessories



SDT SonaVu Plus System

FS.SVU.PLS.001

SDT SonaVu Plus w/ Accessories



SDT SonaVu Plus System ATEX

FS.SVU.PLEX.001

SDT SonaVu Plus ATEX w/ Accessories



ULTRASentry Transmitter Module
FU.2CHTX.001-01

/w 2 Static Channels Ultrasound, Long Range Wireless, M8 4-20mA, DC Power or Battery Power, For use with ULTRASentry Communication Gateways



ULTRASentry Transmitter Module
FU.4CHTX.001-01

/w 4 Static Channels Ultrasound, Long Range Wireless, M8 4-20mA, DC Power only, For use with ULTRASentry Communication Gateways



ULTRASentry Communication Gateway Lite
FU.WRCV.001-01

Supports up to 60 Transmitters, Wi-Fi, Ethernet, for use with FU.2CHTX.001-01 & FU.4CHTX.001-01 Gateways



ULTRASentry Communication Gateway
FU.WRCVC.001-01

Supports up to 60 Transmitters, LTE Cellular (requires SIM card), Wi-Fi, Ethernet, for use with FU.2CHTX.001-01 & FU.4CHTX.001-01 Gateways

Vigilant System



Vigilant Permanent Module

FS.VGLS.001-01

Vigilant Monitoring Module w/ Power Supply, Eight Dynamic Channels Ultrasound or Vibration, 4 Static Channels, Supports Ethernet, USB, OPC and MODBUS TCP Communication Protocols



Vigilant Permanent Eight & Eight Module

FS.VGLC.001-01

Vigilant Monitoring Module w/ Power Supply, Eight Dynamic Channels Ultrasound or Vibration, 8 Static Channels, Supports Ethernet, USB, OPC & MODBUS TCP Communication Protocols



Vigilant Mobility Module

FS.VGLM.001-01

Vigilant Monitoring Module w/ Case, Power Supply, Wifi Router, 8 Dynamic Channels Ultrasound or Vibration, 4 Static Channels, Supports Ethernet, USB, OPC and MODBUS TCP Communication Protocols



Vigilant Proximity Sensor

FU.SEN.PS12.001-01

For Measuring Rotational Speed, Vigilant Permanent or Mobility Modules w/ integral cable; Sensor PS12 to blunt cut, M12 connector included, Length= 6ft/1.8m, IP65

VIGILANT KEY ACTIVATION UPGRADES

Vigilant Key Activation, Order Tracking

FU.VGL.ORT.001

For Vigilant Monitoring Module, Real-Time Frequency Order Tracking for Variable Speed Applications

Vigilant Key Activation, Phase Tools

FU.VGL.PT.001

For Vigilant Monitoring Module, Phase Diagram Activation, Displays Phase and Peak Parameters

Vigilant Key Activation, Advanced Capture

FU.VGL.ADC.001

For Vigilant Monitoring Module, Advanced data storage strategies based on State Transitions, Alarm Changes or Monitoring Cycles

Vigilant Key Activation, Orbit & Shaft Centerline Widget

FU.VGL.OSC.001

For Vigilant Monitoring Module, Orbit Widget and Shaft Centerline Activation, Provides a visual picture of the rotating shaft in motion

SDT200



SDT200SD Base System FSLR200SD-BASE

SDT200SD w/ DataDump, RS2T and Accessories



SDT200SD Surveyor System FSLR200SD-ELS

SDT200SD w/ DataDump, FLEX2, EDS
and Accessories

SDT270



SDT270SD Base System

FSLR270SD-BASE

SDT270SD w/ DataDump, RS2T and Accessories



SDT270SD Surveyor System

FSLR270SD-ELS

SDT270SD w/ DataDump, FLEX2, EDS and Accessories



SDT270 Pro NSW System

FS.R270.PRO-NSW

SDT270DU w/ No Software, RS2T, 10.8" RS2N, FLEX2, AC1, Device Holster, SDT930 Case and Accessories



SDT270 Pro 3 System

FS.R270.PRO

SDT270DU w/ UAS3, RS2T, 10.8" RS2N, FLEX2, AC1, Bearing Tool-box, Device Holster, SDT930 Case and Accessories

SHERLOG Systems

Marine Specific Applications



SHERLOG MATE System

SHERLOG MATE

SDT200SD w/ DataDump, T-Sonic9, FLEX2
and Accessories



SHERLOG MASTER Kit

SHERLOG MASTER

SDT270SD w/ Sherlog Reporter, T-Sonic9,
FLEX2 and Accessories

SDT270 Upgrades

SDT270 PLATFORM UPGRADES

Platform Upgrade, SB to SD w/ DataDump License

FAUPGRKEY270SD

For SDT270 Only, Upgrade SDT270SB to SDT270SD, 1 Installation DataDump License

Platform Upgrade, SB to DU

FAUPGRKEY270DU

For SDT270 Only, Upgrade SDT270SB to SDT270DU

Platform Upgrade, SD to DU

FAUPGRKEY270SD-DU

For SDT270 Only, Upgrade SDT270SD to SDT270DU

Platform Upgrade, SU to DU

FAUPGRKEY270SU-DU

For SDT270 Only, Upgrade SDT270SU to SDT270DU

Platform Upgrade, SD to DD

FAUPGRKEY270SD-DD

For SDT270 Only, Upgrade SDT270SD to SDT270DD, 1 Installation DataDump License

Platform Upgrade, SD to DW

FAUPGRKEY270SD-DW

For SDT270 Only, Upgrade SDT270SD to SDT270DW
Req. DMSI MAINTelligence Interface for SDT270DW Driver



LUBExpert Upgrade System for SDT270DU/SU-MK2

FA.UKIT.R270.LBX

For SDT270DU/SDT270SU, NE280 xxx xxx, LUBExpert Key, LUBEsense1, Cradle and Accessories

SDT270 ACTIVATION UPGRADES

Key Activation, Temperature

FAUPGRKEY270T

For SDT270/200/LUBExpert, Sensor ID: TEMP2

Key Activation, Tachometer

FAUPGRKEY270R

For SDT270 Only, Sensor ID: RPM270

Key Activation, Vibration

FAUPGRKEY270A

For SDT270 Only, Sensor ID: AC1, No ATEX

Key Activation, Sherlog w/ Sherlog Reporter License

FAUPGRKEY270SH

For SDT270 Only, 1 Installation Reporter License

Key Activation, LUBExpert

FAUPGRKEY270L

For LUBExpert/SDT270DU/SDT270SU, Sensor ID: LUBEsense1

UAS3

Ultranalysis Suite

SD-DU Upgrade

DU Upgrade Pack, Platform and Master Site License

FA.UKIT.R270.SD-DU

For SDT270 Only, Upgrade SDT270SD to SDT270DU, 1 UAS3 Networked License, Dynamic

Ultranalysis Suite



Ultranalysis Suite 3 Master Site License, Network

FASFTWUAS3M

For SDT340/270/LUBExpert, 1 UAS3 Installation
Networked License



Ultranalysis Suite 3 Additional Site License, Network

FASFTWUAS3S

For SDT340/270/LUBExpert, 1 UAS3 Installation
Networked License, Must Have Master SiteBUS TCP
Communication Protocols



Bearing Toolbox Fault Frequency Database and Cursors Upgrade

FASFTWUAS3-BEAR

For SDT340/270/LUBExpert Dynamic, Single License
Upgrade, Must have active UAS3 License

SDT Training



ISO CAT Level I Preparation Course, Online On-Demand, Single User Edition

WBH-OL1-001

One-Year Access, Includes UE1 Subscription



ISO CAT I Ultrasound

TR-CAT1-UT

Traning Course and Exam, Training Course Only, or Exam Only, Individual Registration



ISO CAT Vibration Public Training Course and Exam

TR-CAT1-VIB TR-CAT2-VIB

ISO CAT I and II Available, Individual Registration



SDT Level 2 Ultrasound Public Training Course

TR-CAT2-UT

Traning Course and Exam, Individual Registration



Ultrasound Essentials 1, Single User Pro Edition

WBH-UE1-001

One-Year Access, Includes a Certificate of Completion



LUBExpert Essentials, Single User Online Edition

WBH-LBX-002

One to One Remote Mentoring Available, One-Year Access, Includes LUBExpert Essentials Digital Badge



1-Day Onsite Implementation

TR-IMP1-DOS

Travel Expenses Additional, Max 5-Days Onsite Implementation

COMMONSENSE SENSORS & CABLES



COMMONSense Sensors

IP65 RATED CONTACT - THREADED



COMMONSense 0-10V Heterodyne Contact Sensor, Threaded, IP65 Rated w/o Cable

FU.SEN.RSV.001-01

For SDT Vigilant or Other Third Party Standard Measurement Systems (PLC, DCS, SCADA Systems)



COMMONSense 4-20mA Heterodyne Contact Sensor, Threaded, IP65 Rated w/o Cable

FU.SEN.RSC.001-02

For Third Party Standard Measurement Systems (PLC, DCS, SCADA Systems)



COMMONSense 0-3.6V Heterodyne Contact Sensor, Low Power, Threaded, IP65 Rated w/o Cable

FU.SEN.RSV.011-01

For Third Party Standard Measurement Systems (PLC, DCS, SCADA Systems)



COMMONSense True 4-20mA Heterodyne Contact Sensor, Threaded, IP65 Rated w/o Cable

FU.SEN.RSC.101-03

For Third Party Standard Measurement Systems (PLC, DCS, SCADA Systems)



COMMONSense IEPE Heterodyne Contact Sensor, Threaded, IP65 Rated w/o cable

FU.SEN.RSIE.001-03

For Third Party Standard Measurement Systems (PLC, DCS, SCADA Systems)

IP65 RATED - AIRBORNE



COMMONSense 0-10V Heterodyne Airborne Sensor, Closed, IP65 Rated w/o Cable

FU.SEN.RSV.002-01

For SDT Vigilant or Other Third Party Standard Measurement Systems (PLC, DCS, SCADA Systems)



COMMONSense 4-20mA Heterodyne Airborne Sensor, Closed, IP65 Rated w/o Cable

FU.SEN.RSC.002-01

For Third Party Standard Measurement Systems (PLC, DCS, SCADA Systems)



COMMONSense 0-3.6V Heterodyne Airborne Sensor, Low Power, Closed, IP65 Rated w/o Cable

FU.SEN.RSV.012-01

For Third Party Standard Measurement Systems (PLC, DCS, SCADA Systems)

COMMONSense Sensors

IP65 RATED - AIRBORNE



COMMONSense True 4-20mA Heterodyne Airborne Sensor, Closed, IP65 Rated w/o Cable

FU.SEN.RSC.102-03

For Third Party Standard Measurement Systems (PLC, DCS, SCADA Systems)



COMMONSense IEPE Heterodyne Airborne Sensor, Closed, IP65 Rated w/o Cable

FU.SEN.RSIE.002-03

For Third Party Standard Measurement Systems (PLC, DCS, SCADA Systems)

IP40 RATED - AIRBORNE



COMMONSense 0-10V Heterodyne Airborne Sensor, Open, IP40 Rated w/o Cable

FU.SEN.RSV.003-01

For SDT Vigilant or Other Third Party Standard Measurement Systems (PLC, DCS, SCADA Systems)



COMMONSense 4-20mA Heterodyne Airborne Sensor, Open, IP40 Rated w/o Cable

FU.SEN.RSC.003-01

For Third Party Standard Measurement Systems (PLC, DCS, SCADA Systems)



COMMONSense 0-3.6V Heterodyne Airborne Sensor, Low Power, Open, IP40 Rated w/o Cable

FU.SEN.RSV.013-01

For Third Party Standard Measurement Systems (PLC, DCS, SCADA Systems)



COMMONSense True 4-20mA Heterodyne Airborne Sensor, Open, IP40 Rated w/o Cable

FU.SEN.RSC.103-03

For Third Party Standard Measurement Systems (PLC, DCS, SCADA Systems)



COMMONSense IEPE Heterodyne Airborne Sensor, Open, IP40 Rated w/o Cable

FU.SEN.RSIE.003-03

For Third Party Standard Measurement Systems (PLC, DCS, SCADA Systems)

COMMONSense Cables



Cable for COMMONSense, Vigilant Permanent, Straight M8 to Blunt Cut

FU.RSC.CABL.01.015-01 FU.RSC.CABL.01.030-01 FU.RSC.CABL.01.050-01
FU.RSC.CABL.01.100-01 FU.RSC.CABL.01.150-01 FU.RSC.CABL.01.200-01
FU.RSC.CABL.01.300-01

For SDT COMMONSense Range and Vigilant Permanent Module, Cable M8 4PF-Z, Straight Shielded (Ranging from 1.5m-30m)



Cable for COMMONSense, Vigilant Permanent, 90 Deg M8 to Blunt Cut

FU.RSC.CABL.02.015-01 FU.RSC.CABL.02.030-01 FU.RSC.CABL.02.050-01
FU.RSC.CABL.02.100-01 FU.RSC.CABL.02.150-01 FU.RSC.CABL.02.200-01
FU.RSC.CABL.02.300-01

For SDT COMMONSense Range and Vigilant Permanent Module, Cable M8 4PF-Z, 90 Degree Shielded (Ranging from 1.5m-30m)



Cable for Accelerometer, Vigilant Permanent, Straight MS2 to Blunt Cut

FU.ACC.CABL.01.050-1 FU.ACC.CABL.01.100-1 FU.ACC.CABL.01.200-1
FU.ACC.CABL.01.300-1

For SDT Accelerometers 100mV/g, Used with Vigilant Permanent Module, Cable MS2-Z, Straight Shielded (Ranging from 5m-30m)



Cable for COMMONSense, Vigilant Mobility, Straight M8 to Straight M8

FU.RSC.CABL.01.050-1 FU.RSC.CABL.01.100-1 FU.RSC.CABL.01.200-1
FU.RSC.CABL.01.300-1

For SDT COMMONSense Range, Used with Vigilant Mobility Module, Cable M8 4PM-M8 4PF, Straight Shielded (Ranging from 1.5m-20m)



Cable for COMMONSense, Vigilant Mobility, Straight M8 to 90 Deg M8

FU.RSC.CABL.06.015-1 FU.RSC.CABL.06.030-1 FU.RSC.CABL.06.050-1
FU.RSC.CABL.06.100-1 FU.RSC.CABL.06.200-1

For SDT COMMONSense Range, Used with Vigilant Mobility Module, Cable M8 4PM-M8 4PF, 90 Degree Shielded (Ranging from 1.5m-20m)

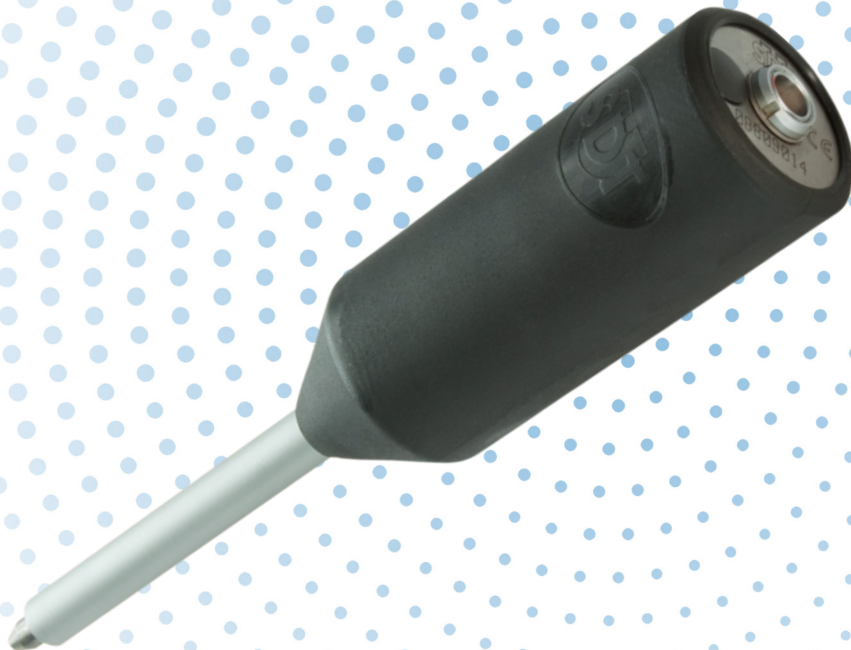


Cable for Accelerometer, Vigilant Mobility, Straight MS2 to Straight M8

FU.ACC.CABL.02.050-1 FU.ACC.CABL.02.100-1 FU.ACC.CABL.02.200-1

For SDT COMMONSense Range, Used with Vigilant Mobility Module, Cable M8 4PM-M8 4PF, 90 Degree Shielded (Ranging from 1.5m-20m)

SDT SENSORS, CABLES & ACCESSORIES



SDT RS2 Contact Sensors

RS2 CONTACT - THREADED



RS2T Contact Sensor, Threaded, w/o Cable

FU.SEN.RS2T.001-01

For SDT340/270/200/Online4US/ULTRAChecker, Sensor ID: RS2T, D=M6, Lemo, Req FUCABLSPLE7LE7-10, Range: 50m/164.04ft.



LUBEsense1 Contact Sensor, Threaded, w/o Cable

FU.SEN.LUBE.001-01

For SDT340/LUBExpert/SDT270/ULTRA/LUBEChecker, Sensor ID: LUBEsense1, D=M6, Lemo, Req FUCABLSPLE7LE7-10, Range: 50m/164.04ft.

RS2 CONTACT - NEEDLE



3.2" RS2N Contact Sensor, Needle, w/o Cable

FU.SEN.RS2N.001-01

For SDT340/270/200/ULTRA/TRAPChecker, Sensor ID: RS2NL100, L=82mm (3.23"), Req FUCABLSPLE7LE7-10



10.8" RS2N Contact Sensor, Needle, w/o Cable

FU.SEN.RS2N.002-01

For SDT340/270/200/ULTRA/TRAPChecker, Sensor ID: RS2NL300, L=275mm (10.83"), Req FUCABLSPLE7LE7-10



18.5" RS2N Contact Sensor, Needle, w/o Cable

FU.SEN.RS2N.003-01

For SDT340/270/200/ULTRA/TRAPChecker, Sensor ID: RS2NL500, L=470mm (18.50"), Req FUCABLSPLE7LE7-10

SDT RS2 Airborne Sensors



ULTRAsense Airborne Sensor, 16mm Sensor

FU.SEN.UTS.001-01

For SDT340/270/200/ULTRAChecker, Sensor ID: ULTRAsense, D=16mm (0.63"), Integrated Connector



FLEX2 Flexible Airborne Sensor, 16mm Tip, w/o Cable

FS.FLX2.R16.001-01

For SDT340/270/200/ULTRA/TIGHT/HATCHChecker, Sensor ID: FlexID2, L=545mm (21.46"), D=16mm (0.63"), Req FUCABLSPLE7LE7-10



FLEX2 Flexible Airborne Sensor, 10mm Tip, w/o Cable

FS.FLX2.R10.001-01

For SDT340/270/200/ULTRA/TIGHT/HATCHChecker, Sensor ID: FlexID2, L=545mm (21.46"), D=10mm (0.39"), Req FUCABLSPLE7LE7-10



AIRsense Airborne Sensor, w/ Accessories, w/o Cable

FS.SEN.AIRS.001-01

For SDT340/ULTRAChecker, Sensor ID: AirSense, Req FUCABLSPLE7LE7-10, Includes FU.SEN.AIR.001-01, SAMR270PISH-02, SIRUBSENS18MMSI, SAMR270CSH-02



ParaDish2 Airborne Parabolic Sensor

FU.PAR2.005

For SDT340/270/200, Sensor ID: ParaDish2, Integral Cable-L7M, Class II Laser

SDT Accelerometer



AC1 Accelerometer, 100 mV/g, Top Exit, w/o Cable

FUSV270-01-02

For SDT340/270, Sensor ID: Acc100/AC1, D=M6, 2-Pin Military Spec, Req FUCABLSPLE7MS2-02



AC1 Accelerometer, 100 mV/g, Side Exit, w/o Cable

FUSV270-02-02

For SDT340/270, Sensor ID: Acc100/AC1, D=M6, 2-Pin Military Spec, Req FUCABLSPLE7MS2-02ID: FlexID2, L=545mm (21.46"), D=16mm (0.63"), Req FUCABLSPLE7LE7-10

IP65 Rated Contact Sensors



RS2T Contact Sensor, Threaded, IP65 Rated, w/o Cable

FU.SEN.RS2T.002-01

For SDT340/270/200/Online4US/ULTRAChecker, Sensor ID: RS2T, D=M6, Lemo, Req IP65 Rated Cable, Range: 50m/164.04ft.



LUBEsense1 Contact Sensor, Threaded, IP65 Rated, w/o Cable

FU.SEN.LUBE.002-01

For SDT340/LUBExpert/SDT270/ULTRA/LUBEChecker, Sensor ID: LUBEsense1, D=M6, Lemo, Req IP65 Rated Cable, Range: 50m/164.04ft.

SDT RS1 Contact Sensors



RS1T Contact Sensor, Threaded, w/o Cable

FUSCRS3-01

For SDT270/200/170, Sensor ID: RS1T, D=M6, Lemo, Req
FUCABLSPLE7LE7-3/8/5



3.2" RS1N Contact Sensor, Needle, w/o Cable

FUSOND270-01

For SDT270/200/170, Sensor ID: RS1NL100, L=82mm (3.23"), Lemo, Req
FUCABLSPLE7LE7-3/8/5



10.8" RS1N Contact Sensor, Needle, w/o Cable

FUSOND270-02

For SDT270/200/170, Sensor ID: RS1NL300, L=275mm (10.83"),
Lemo, Req FUCABLSPLE7LE7-3/8/5



18.5" RS1N Contact Sensor, Needle, w/o Cable

FUSOND270-03

For SDT270/200/170, Sensor ID: RS1NL500, L=470mm (18.50"),
Lemo, Req FUCABLSPLE7LE7-3/8/5

SDT RS1 ATEX Sensors



RSIT Contact Sensor, Threaded, w/o Cable, ATEX FUSCRS3A-01

For SDT270/200, Sensor ID: RSIT, D=M6, Lemo, Req FUCABLSPLE7LE7-10



3.2" RSIN Contact Sensor, Needle, w/o Cable, ATEX FUSOND270A-01

For SDT270/200, Sensor ID: RS1NL100, L=82mm (3.23"), Lemo, Req FUCABLSPLE7LE7-10



10.8" RSIN Contact Sensor, Needle, w/o Cable, ATEX FUSOND270A-02

For SDT270/200, Sensor ID: RS1NL300, L=275mm (10.83"), Lemo, Req FUCABLSPLE7LE7-10



18.5" RSIN Contact Sensor, Needle, w/o Cable, ATEX FUSOND270A-03

For SDT270/200, Sensor ID: RS1NL500, L=470mm (18.50"), Lemo, Req FUCABLSPLE7LE7-10

SDT RSI ATEX Sensors



21.6" Flexible Airborne Sensor, 16mm Tip, w/o Cable, w/ Extension, ATEX

FUFLEXEX1

For SDT270/200, Sensor ID: ExtUS1, L=550mm (21.65"), D=16mm (0.63"), BNC, Req FUCABLSPLE7BNC22



21.6" Flexible Airborne Sensor, 10mm Tip w/o Cable, w/ Extension, ATEX

FUFLEXEX2

For SDT270/200, Sensor ID: ExtUS1, L=550mm (21.65"), D=10mm (0.39"), BNC, Req FUCABLSPLE7BNC22



ParaDish2 Airborne Parabolic Sensor, ATEX

FU.PAR2.006

For SDT270/200, Sensor ID: ParaDish2, Integral Cable-L7M, Class II Laser, ATEX

Transmitters



T-Sonic1 Ultrasound Transmitter

FU.TSO1.001

Frequency Range 39.6 and 39.9 kHz, Sound Level 85 to 105 dB SPL, Req. 2-AA Batteries



T-Sonic9 Ultrasound Transmitter

FS.TSO9.001

9 Outputs, Frequency Range 39.9 and 40.1 kHz, Sound Level 84 to 113 dB SPL, Req. 6-AA Batteries w/ Accessories



External Open Transducer, 16mm Tip

FUSEUSTO16/J3M

For FU.TSO1.001, Jack 3.5mm Mono, Cable 2.5m



Cable For Sensor, Lemo to Lemo, Coiled

FUCABLSPLE7LE7-10

For SDT340/270/200/LUBExpert/ULTRA/TRAP/LUBE/TIGHTChecker,
Cable 7-Wire (42982), Blue, L7M-L7M, L=600-1800mm (23.62"-70.87")



Cable For Accelerometer, Lemo to MS2, Coiled

FUCABLSPLE7MS2-02

For SDT340/270, Cable MS2 (CC-A2A-175), L7M-MS2, Straight,
L=600-1800mm (23.6"-70.9")



Cable For Generic ICP Accelerometer, Lemo to BNC, Coiled

FUCABLSPLE7BNC18-03

For SDT340/270, Cable Coaxial (RG174), L7M-BNCM, L=600-1800mm
(23.6"-70.9")



Cable for Flexible Sensor, Lemo to BNC, Coiled, Short

FUCABLSPLE7BNC18

For SDT340/270, Cable Coaxial (RG174), L7M-BNCM, L=600-1800mm
(23.6"-70.9")



Cable for Flexible Sensor, Lemo to BNC, Coiled, Long

FUCABLSPLE7BNC22

For SDT270/SDT270ATEX/200/170, Cable Coaxial (RG174), L7M-BNCM,
L=1000-2200mm (39.4"-86.6")



Cable for Contact Sensor, Lemo to Lemo, Coiled, SDT170

FUCABLSPLE7LE7-5

For SDT170 Only, Cable Coaxial (RG174), L7M-L7M, Straight,
L=600-1800mm (23.62"-70.87")



Cable For Contact Sensor, Lemo to Lemo, 10ft./3.05m

FUCABLMPL7LE703-01 FUCABLMPL7LE706-01 FUCABLMPL7LE709-01
FUCABLMPL7LE712-01 FUCABLMPL7LE715-01

For SDT340/270/200/LUBExpert, Cable 7-Wire (32377), Blue, L7M-L7M



Cable For Contact Sensor, Lemo to Lemo, Custom Length (Max=50ft./15.25m)

FUCABLMPL7LE7XX-01

For SDT340/270/200/LUBExpert, Cable 7-Wire (32377), Blue, L7M-L7M,
Custom Length=XXft./XXm



Cable For Accelerometer, MS2 to Lemo, Custom Length (Max=65ft./19.81m)

FUCABLCOLE7MS2-XX

For SDT340/270, Cable (CC-A2A-175), L7M-MS2, Custom Length=XXft./XXm



Cable For Generic ICP Accelerometer, BNC to Lemo, Custom Length (Max=65ft./19.81m)

FUCABLCOLE7BNC-XX

For SDT340/270, Cable Coaxial (RG174), L7M-BNCM, Custom Length=XXft./XXm



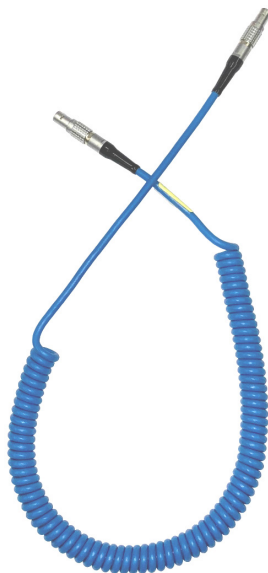
Cable for Ultrasound Inspection Port

FA.SENS.CABL.002-01

For SDT340/ULTRAChecker, Cable 7-wire, Blue, 7P LE7M-J3M Pre-Amplifier Cable

IP65 Rated SDT Cables

Sensor to Device



Cable For Sensor, Lemo to Lemo, Coiled, IP65 Rated

FUCABLSPLE7LE7-11

For SDT340/270/200/LUBExpert/ULTRA/TRAP/LUBE/TIGHTChecker, IP Rated Lemo Connectors, Cable 7-Wire (42982), Blue, L7M-L7M, L=600-1800mm (23.62"-70.87")



Cable For Contact Sensor, Lemo to Lemo, IP65 Rated, Custom Length (Max=50ft./15.25m)

FUCABLMPLE7LE7XX-03

For SDT340/270/200/LUBExpert, IP Rated Lemo Connectors, Cable 7-Wire (32377), Blue, L7M-L7M, L=XXft./XXm

Permanent SDT Cables

IP50 Rated



Cable For Junction Box, Lemo to Lemo, 10ft./3.05m

FU.RMB.CABL.000-03 FU.RMB.CABL.000-07 FU.RMB.CABL.000-13

For SDT340/270/200/LUBExpert, Cable 7-Wire (32377), Blue, L7M-L7F, For Use with Junction Box



Cable For Junction Box, Lemo to Lemo, Custom Length (Max=50ft./15.25m)

FU.RMB.CABL.000-XX

For SDT340/270/200/LUBExpert, Cable 7-Wire (32377), Blue, L7M-L7F, For Use with Junction Box, Custom Length=XXft./XXm



Cable For Junction Box, Lemo to Lemo, Custom Length (50ft./15.25m-82ft./25m)

FU.RMB.CABL.005-XX

For SDT340/270/200/LUBExpert, Cable 7-Wire (32377), Blue, L7M-L7F, For Use with Junction Box, Custom Length=XXft./XXm



Cable For Junction Box, MS2 to Lemo, Custom Length (Max=65ft./19.81m)

FU.RMB.CABL.001-XX

For SDT340/270, Cable (CC-A2A-175), MS2-L7F, Custom Length=XXft./XXm



Cable For Junction Box, BNC to Lemo, Custom Length (Max=65ft./19.81m)

FU.RMB.CABL.004-XX

For SDT340/270, Cable Coaxial (RG174), BNCM-L7F, For Use with Junction Box, Custom Length=XXft./XXm

*PERMANENT NON IP65 RATED CABLES ARE COMPATIBLE WITH:

Junction Box

FU.RMB.004 | Pg. 31

FU.RMB.001 | Pg. 41

FU.RMB.003 | Pg. 41

Sensors

FU.SEN.RS2T.001-01 | Pg. 27

FU.SEN.LUBE.001-01 | Pg. 27

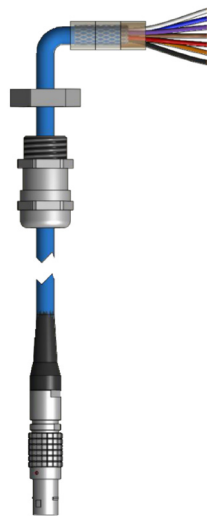
FUSCRS3-01 | Pg. 31

FUSV270-01-02 | Pg. 29

FUSV270-02-02 | Pg. 29

Permanent SDT Cables

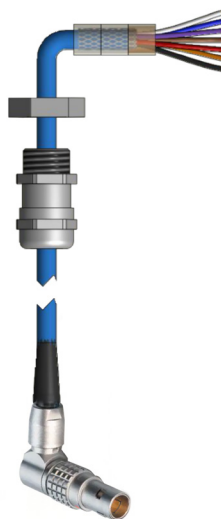
Custom Length PCB. IP50 Rated



Cable For Junction Box, Terminal Block Plug to Lemo, Custom Length (Max=98.4ft./30m)

FU.RMB.CABL.100-XX

For SDT340/270/200/LUBExpert, Cable 7-Wire (32377), Blue, 7P-LE7M, For Use with FU.RMB.PCB-003, Custom Length=XXft./XXm



Cable For Junction Box, Terminal Block Plug to Lemo 90 Deg, Custom Length (Max=98.4ft./30m)

FU.RMB.CABL.101-XX

For SDT340/270/200/LUBExpert, Cable 7-Wire (32377), Blue, 7P-LE7M 90 Deg, For Use with FU.RMB.PCB-003, Custom Length=XXft./XXm

*PERMANENT CUSTOM LENGTH PCB CABLES ARE COMPATIBLE WITH:

Junction Box

FU.RMB.PCB-003 | Pg. 43

Sensors

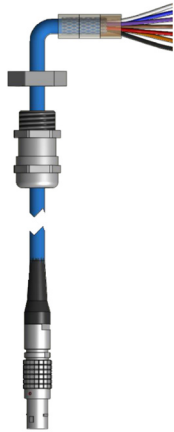
FU.SEN.RS2T.001-01 | Pg. 27 FUSV270-01-02 | Pg. 29

FU.SEN.LUBE.001-01 | Pg. 27 FUSV270-02-02 | Pg. 29

FUSCRS3-01 | Pg. 31

Permanent IP65 SDT Cables

Custom Length PCB



Cable For Junction Box, Terminal Block Plug to Lemo, IP65 and High Temperature Rated, Custom Length (Max=50ft./15.25m)

FU.RMB.CABL.110-XX

For SDT340/270/200/LUBExpert, Cable 7-Wire (32377), Blue, 7P-LE7M IP65, For Use with FU.RMB.PCB-003, Custom Length=XXft./XXm

*PERMANENT IP65 RATED CUSTOM LENGTH PCB CABLES ARE COMPATIBLE WITH:

Junction Box

FU.RMB.PCB-003 | Pg. 41

Sensors

FU.SEN.RS2T.002-01 | Pg. 30

FU.SEN.LUBE.002-01 | Pg. 30



Cable For Junction Box, Lemo to Lemo, IP65 Rated, Custom Length (Max=50ft./15.25m)

FU.RMB.CABL.010-XX

For SDT340/270/200/LUBExpert, IP Rated Lemo Connectors, Cable 7-Wire (32377), Blue, L7M-L7M, L=XXft./XXm

Cable For Junction Box, Lemo to Lemo, IP65 and High Temperature Rated, Custom Length (Max=50ft./15.25m)

FU.RMB.CABL.020-XX

For SDT340/270/200/LUBExpert, IP Rated Lemo Connectors, Rated up to 150C\300F, Cable 7-Wire (32377), Blue, L7M-L7M, L=XXft./XXm



*PERMANENT NON IP65 RATED CABLES ARE COMPATIBLE WITH:

Junction Box

FU.RMB.004 | Pg. 41

FU.RMB.001 | Pg. 41

FU.RMB.003 | Pg. 41

Sensors

FU.SEN.RS2T.002-01 | Pg. 30

FU.SEN.LUBE.002-01 | Pg. 30

Junction Boxes



4 Channel Junction Box, Lemo, ABS

FU.RMB.004

For 1-4 RS2T/AC1/RS1T, Lemo Connectors, IP 65 Rated



10 Channel Junction Box, Lemo, ABS

FU.RMB.001

For 1-10 RS2T/AC1/RS1T, Lemo Connectors, IP 65 Rated



12 Channel Junction Box, Lemo, Stainless Steel

FU.RMB.003

For 1-12 RS2T/AC1/RS1T, Lemo Connectors, IP 66 Rated

***FOR SENSORS AND CABLES COMPATIBLE WITH
JUNCTION BOX REFER TO:**

IP50 Rated | Pg. 38 IP65 Rated | Pg. 40



12 Channel Junction Box, Lemo, Stainless Steel /w PCB connectors

FU.RMB.PCB-003

For 1-12 RS2T/RS1T, Lemo Connectors, IP66 Rated, Includes Internal Lemo PCB connectors for custom cable termination, Req. FU.RMB.CABL.100-XX

***FOR SENSORS AND CABLES COMPATIBLE WITH
JUNCTION BOX REFER TO:**

IP50 Rated | Pg. 39 IP65 Rated | Pg. 40

Accessories

SDT340 BATTERIES



Battery Pack, SDT340

FU.R340.BPS-02

For SDT340 Only, NiMh 4.8V - 3600 mAh



Battery Charging Station w/o Power Supply

FU.R340.BDS-01

For SDT340 Only



Power Supply For Battery Charging Station w/ Adapters

FU.R340.PS0-01

For SDT340 Only, w/ US-EU-UK-AU Adapters, Type A-C-G-I



Battery Charging Station with Power Supply and Adapters

FU.R340.BDPS-01

For SDT340 Only, w/ US-EU-UK-AU Adapters, Type A-C-G-I, Assembly of FU.R340.BDS-01 + FU.R340.PS0-01



USB 3.1 Cable

SICABUSB-12-01

For SDT340 Only, USB Type C Male - USB Type A Male, 1m (39.4")



SDT USB Memory Drive

DMSDTNAUSB

For SDT340/270/200/SDT8/LUBExpert, User's Manual and Application Software on USB Key



Shoulder Strap

FAHOLSAC-01

For SDT340/270/200/170/SDT8/LUBExpert/ T-Sonic9, Attaches to Bottom of Device

ACCESSORIES

Accessories

ACCESSORIES



Leather Belt Holder w/ Clip

FAHOLSAC-02

For SDT340/270/200/LUBExpert, Attaches to Rear of Device



Reflective Label for Tachometer

FARPMNLABEL

For SDT340/270, Pack of 4 Labels 20 x 50mm

MOUNTING & FITTING



Magnetic Base, Multi Surface

FUSEACMAG-02

For RS2T/AC1/LUBEsense1/RSIT, D=30mm x 23mm (1.18" x 0.91"), Thread D=M6



Lube Adapter w/ Grease Coupler

FU.SEAC.LUB.006-01

For RS2T/LUBEsense1/RSIT, Zerk Grease Nipple, Thread D=M6



Lube Adapter Thread Adapter

SA.LBX.MMF.012-01

For FU.SEAC.LUB.006-01, BSP 1/8" Male to NPT 1/8" Female, Galvanized Steel



Magnetic Base, Flat Surface

FUSEACMAG-01

For RS2T/AC1/LUBEsense1/RSIT, D=24mm x 14mm (0.94" x 0.55"), Thread D=M6



Mounting Pads, Pack of 10

FUSEACMP1

For RS2T/AC1/LUBEsense1/RSIT, D=24mm x 10mm (0.94" x 0.39"), Thread D=M6, Pkg Qty 10

Accessories

MOUNTING & FITTING



Mounting Pad, Single FUSEACMP2-01

For RS2T/AC1/LUBEsense1/RSIT, D=24mm x 10mm (0.94" x 0.39"), Thread D=M6, Single



Pull-On Lube Adapter FUSEACLUBE-04

For RS2T/LUBEsense1/RSIT, Button Head 1/8" Standard Pull-On Lubrication Fitting



Push-On Lube Adapter FUSEACLUBE-05

For RS2T/LUBEsense1/RSIT, Button Head 1/8" Standard Push-On Lubrication Fitting



Headphones, Neckband FUHDPH-21

For SDT340/270/200/170/FLEX.US/LUBExpert/Checker Range, Headset For Use w/ Hardhat, 1/4" (6.35mm) Jack



Headphones, Over Head FUHDPH-22

For SDT340/270/200/170/FLEX.US/LUBExpert/Checker Range, Headset For Use w/ Hardhat, 1/4" (6.35mm) Jack



Headphones w/ Hardhat Attachment FUHDPH-23

For SDT340/270/200/170/FLEX.US/LUBExpert/Checker Range, Headset to Mount on Hardhat, 1/4" (6.35mm) Jack



Replacement Headphone Cable FUCABLHDPH.01-01

For FUHDPH-21/22/23, 1/4" (6.35mm) Jack

AUDIO

Accessories

AUDIO



Headphones, Overhead, Bluetooth

FUHDPH-8

For SDT340 Only, Headset For Use w/o Hardhat



Bluetooth Transmitter Module

FS.HDPH.BT.001-01

For Checkers Range only, Includes Cable Accessories; Requires Bluetooth headset



SIHEADFPELTHY79

Headphone Hygiene Kit

For FUHDPH-21/22/23/1/2/7/8, Includes Earseals, Sealing Rings and Foam Inserts



Loudspeaker

FUHDPH-4

For SDT340/270/200/170/FLEX.US/LUBExpert/Checker Range, 1/4" (6.35mm) Jack



Y-Connector

FUCOAJ6Y

For FUHDPH-21/22/23/1/2/4/7, Splits Output to 2 Headphones, 1/4" (6.35mm) Jack

SENSOR PARTS



16mm Tip For Airborne Sensor

FA.FLX2.R16.001

For FLEX2/LEAKChecker, D=16mm (0.63")



10mm Tip For Airborne Sensor

FA.FLX2.R10.001

For FLEX2/LEAKChecker, D=10mm (0.39")

Accessories

SENSOR PARTS



Rubber Tip

SIRUBSENS18MMSI

For FA.FLX2.R16.001-01/FAFLEXSENS16RA/SAMR270PISH-02, D=16mm (0.63")



Extended Distance Sensor

FUSEACEDS-02

For AIRsense Airborne Sensor or SDT270/200 Internal Sensor, EDS Cone for US Sensor



Sensor Cap

SAMR270CSH-02

For AIRsense Airborne Sensor or SDT270/200 Internal Sensor, Protector Cap for US Sensor



Precision Indicator

SAMR270PISH-02

For AIRsense Airborne Sensor or SDT270/200 Internal Sensor, Focusing Attachment for US Sensor



Ring Sensor Holder

SAMR270RSH-01

For AIRsense Airborne Sensor or SDT270/200 Internal Sensor, Thread Protector for US Sensor

EXTENSIONS



Telescopic Extension For Airborne and Contact Sensors

FU.TEP.001-01

For FLEX2/RS2T/RS2N/LUBEsense1, Fibreglass Telescopic Extension, RS2 Sensors
Req. Adapter, L=380mm-1000mm (14.96"-39.37")



Extension Pole For Airborne Sensors

FA.FLX2.HND.003-01

For FLEX2/FLEX1, Metal Extension w/ Rubber Handle, L=400mm (15.75")

Accessories

EXTENSIONS



Contact Sensor Adapter For Telescopic Extension

FU.TEP.ACC01-01

For RS2T/RS2N/LUBEsense1, Attaches to Telescopic Extension, L=100mm (3.94")

NEEDLE EXTENSIONS



5.24" Needle Assembly Extension

SA.CP2.MMF.002-B

For RS2T/LUBEsense1/RS1T, L=133mm (5.24"), Thread D=M6, See Product Disclaimer



12.8" Needle Assembly Extension

SA.CP2.MMF.003-B

For RS2T/LUBEsense1/RS1T, L=325mm (12.8"), Thread D=M6, See Product Disclaimer



20.55" Needle Assembly Extension

SA.CP2.MMF.004-B

For RS2T/LUBEsense1/RS1T, L=522mm (20.55"), Thread D=M6, See Product Disclaimer

SIGNAL AMPLIFIERS



RAPsody Box Ultrasound Signal Simulator

FS.MBT3.001

RAPsody Box w/ USB Cable, USB Drive, and RAPsody Software, UT Sound Generator for Teaching, Training and Testing



Remote for T-Sonic9, Bluetooth

FU.TSO9.002

For T-Sonic9 Only

CARRYING CASES



SDT915 Custom Carrying Case, Checker Range

FU.CA915.CBOX.001-01

NK-7 Resin Exterior, PowerClaw Latching System, IP67 Rated, Lockable, L15.8" x W12.1" x H6.8" (L401mm x W307mm x H173mm)

Accessories

CARRYING CASES



SDT930 Custom Carrying Case, SDT340/270/200/LUBExpert FU.CA930.CBOX.001-01

NK-7 Resin Exterior, PowerClaw Latching System, IP67 Rated, Lockable, L19.8" x W16.0" x H7.6" (L503mm x W406mm x H193mm) For SDT340/270/200/LUBExpert



SDT930 Custom Carrying Case, SonaVu FU.CA930.CBOX.002-01

NK-7 Resin Exterior, PowerClaw Latching System, IP67 Rated, Lockable, L19.8" x W16.0" x H7.6" (L503mm x W406mm x H193mm) For SDT SonaVu



SDT945 Custom Carrying Case, SDT340/270/200/LUBExpert FU.CA945.CBOX.001-01

NK-7 Resin Exterior, PowerClaw Latching System, IP67 Rated, Lockable, L25.1" x W19.9" x H8.8" (L638mm x W505mm x H224mm)



Upgrade SDT930 to SDT945 Custom Carrying Case FU.UP945.CBOX.001-01

NK-7 Resin Exterior, PowerClaw Latching System, IP67 Rated, Lockable, L25.1" x W19.9" x H8.8" (L638mm x W505mm x H224mm)



LEAKChecker Custom End User Carrying Case, Green Latches FU.LKC.CBOX.001-01

T6 Evolution Blue Plastic Case w/ Slide Latches



TRAPChecker Custom End User Carrying Case, Blue Latches FU.TPC.CBOX.001-01

T6 Evolution Blue Plastic Case w/ Slide Latches



TIGHTChecker Custom End User Carrying Case, Red Latches FU.TIC.CBOX.001-01

T6 Evolution Blue Plastic Case w/ Slide Latches

Accessories

CARRYING CASES



HATChecker Custom End User Carrying Case, Black Latches

FU.HTC.CBOX.001-01

T6 Evolution Blue Plastic Case w/ Slide Latches



Checker Range Custom Demo Carrying Case, White Latches

FU.CHK.CBOX.001-01

T6 Evolution Blue Plastic Case w/ Slide Latches



ParaDish Carrying Case

FU.ULC.TBX.001-1

For ParaDish, ULTRAChecker PD System

LUBExpert



USB Cable

SICABUSBAUSBBM

For SDT270/200/LUBExpert/Checker Range/T-Sonic9/T-Sonic1, USB 2.0 Cable, USB Type B5 Mini, 1.8m (70.9")



LUBExpert Grease Gun Mounting Cradle

FU.LBX.DVC.001-01

For SDT270/200/LUBExpert, Attaches to Rear of Device w/ Bracket



SDT Universal Battery Charger w/o Cord

FUPWSPUN-01

For SDT270/200/170/LUBExpert, Input 100-240VAC/50-60Hz/250mA/25VA



US Power Cord For Universal Battery Charger

FUCABLPWRC7US-01

For FUPWSPUN-01, Type A-C7 Power Cable, 5.9ft./1.8m

Accessories

LUBExpert



EU Power Cord For Universal Battery Charger FUCABLPWRC7EU-01

For FUPWSPUN-01, Type C-C7 Power Cable, 5.9ft./1.8m



UK Power Cord For Universal Battery Charger FUCABLPWRC7UK-01

For FUPWSPUN-01, Type G-C7 Power Cable, 5.9ft./1.8m



AU Power Cord For Universal Battery Charger FUCABLPWRC7AU-01

For FUPWSPUN-01, Type I-C7 Power Cable, 5.9ft./1.8m

CHECKER MOUNTS



Checker Grease Gun Mounting Cradle FU.LBC.DVC.001-02

For ULTRA/LUBEChecker, Attaches to Rear of Device w/ Bracket and Strap



Checker Magnetic Mount FU.LBC.DVC.002-01

For ULTRA/LUBEChecker, Attaches to Rear of Device w/ Multi-Magnet

SONAVU+



SonaVu Plus Power Supply w/ Adapters FU.SVUP.PWR.001

For SonaVu Plus Only, w/ US-EU-UK-AU Adapters, Type A-C-G-I



SonaVu Plus External Battery Pack FU.SVUP.EXBP.001

For SonaVu Plus Only, Li-ion, Requires SonaVu External Battery Cable

Accessories

SONAVU+



SonaVu Plus External USB-C Cable

FU.SVUP.EXUSB.001

For SonaVu Plus Only, USB-C to USB-C, 2m



SonaVu Plus External USB-C Cable

FU.SVUP.EXUSB.002

For SonaVu Plus Only, USB-C to USB-C, Coiled



SonaVu Plus Hand Strap

FU.SVUP.STR.001

For SonaVu Plus Only



SonaVu Plus Rubber Grips

FU.SVUP.GRP.001

For SonaVu Plus Only



SonaVu Plus LCD Display Module

FU.SVUP.LCD.001

For SonaVu Plus Only

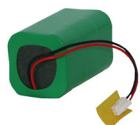


SonaVu Plus Internal Battery

FU.SVUP.IBP.001

For SonaVu Plus Only, Li-ion

SONAVU



SonaVu Internal Battery

FU.SVU.IBP.001

For SonaVu Only, Li-ion

Accessories

SONAVU



SonaVu Internal Memory Card

FU.SVU.IMC.001

For SonaVu Only, Micro SDXC



SonaVu Power Supply w/ US Cableer

FU.SVU.PWR.001

For SonaVu Only, Type A



SonaVu Universal Power Adapter

FU.SVU.ADT.001

For SonaVu Only, w/ US-EU-UK-AU Adapters, Type A-C-G-I



SonaVu External Battery Pack

FU.SVU.EXBP.001

For SonaVu Only, Li-ion, Requires SonaVu External Battery Cable



SonaVu External Battery Charger

FU.SVU.EXBC.001

For SonaVu Only, 65w, Includes UDB-C Cable



SonaVu External Battery Cable

FU.SVU.EXPC.001

For SonaVu Only, Lemo



SonaVu Hand Strap

FU.SVU.STR.001

For SonaVu Only

Accessories

SONAVU



SonaVu Rubber Grips

FU.SVU.GRP.001

For SonaVu Only



SonaVu External USB-C Cable

FU.SVU.EXUSB.001

For SonaVu Only, USB-C to USB-C

MISC.



LEAKReporter Custom Report Pack of 10

FASFTWLRP0010

Custom Branded SDT LEAKReporter Report, 10 Reports



SDT Leak Tags, Set of 250

FULEAKSET1

Individually Numbered Leak Tags 250 pcs.



LUBExpert Multi-Purpose Gloves, 12 Pack

FS.LTX.001

LUBExpert Branded Nitrile Grip Coated Gloves, One Size Fits All

BATTERIES



Power Supply For Vigilant Permanent Module /w power adapters & adapter cable

FA.RSC.PSV.001-01

For Vigilant Permanent Module, w/ US-EU-UK-AU Adapters, Type A-C-G-I

Accessories

BATTERIES



Battery Adapter Charging Tray, SDT8

FUBATTAD8

For FUBATTT008



Battery, SDT8

FUBATTT008

For SDT8, Rechargeable Lead-Acid Battery, 12V/1.2Ah



Battery, SDT170

FUBATTR170

For SDT170 Only, NiMH 7.2V/1600mAh

PROTECTIVE HOLSTERS



SDT Checker Device Holster

FU.CHK.HST.001-01

For All Checkers, Heavy Duty Nylon Casing w/ Vinyl Front, Adjustable Belt Clip, Bluetooth Module Pouch



SDT 340 Device Holster

FU.R340.HST.001-01

For SDT340, Heavy Duty Nylon Casing w/ Vinyl Front, Reflective Stripping, Lemo Caps, Magnets



SDT 270/200 Non-Atex Device Holster

FU.270.HST.001-01

For SDT270/200, Heavy Duty Nylon Casing w/ Vinyl Front, Reflective Stripping, Lemo Caps on Top, Magnets on Rear, Non-Atex devices only



SDT LUBExpert Device Holster

FU.LBX.HST.001-01

For LUBExpert, Heavy Duty Nylon Casing w/ Vinyl Front, Reflective Stripping, Lemo Cap on Top, Magnets on Rear

Accessories

HOLSTERS



Blue Rubber Holster, SDT270

FAHOLS270-01

For SDT270 Only



Rubber Holster, Blue, SDT170

FAHOLS170-01

For SDT170 Only



Rubber Holster, Sherlog Red, SDT170

FAHOLS170-02

Individually Numbered Leak Tags 250 pcs.



Headphones, Neckband, ATEX

FUHDPH-26

For SDT270/200 ATEX, Headset for Use w/ Hardhat, 1/4" (6.35mm) Jack



Tip for Flexible Sensor, 16mm, ATEX

FAFLEXSENS16RA

For FUFLEXEX1 Flexible Airborne Sensor, D=16mm (0.63")



Tip for Flexible Sensor, 10mm, ATEX

FAFLEXSENS10RA

For FUFLEXEX2 Flexible Airborne Sensor, D=10mm (0.39")

ATEX



Blue Rubber Holster, SDT270, ATEX

FAHOLS270-02

For SDT270 ATEX Only

Accessories

LUBExpert On-Guard



LUBExpert On-Guard Module

FU.SRL.PLC.000-01

LUBExpert On-Guard Module w/ Software



LUBExpert On-Guard Single Point Automatic Lubrication Drive

SI.LBX.PRT.004

For SDT LUBExpert On-Guard, Perma Star Control 2.0, 1 Channel, Lubricant Volume 60cc to 500cc, IP 65



LUBExpert On-Guard Grease Cartridge

SI.LBX.PGC.060A-01 SI.LBX.PGC.060C-01 SI.LBX.PGC.060D-01

For SDT LUBExpert On-Guard, Perma Star Control 2.0, 60 CC, Category A (SF01), 10 Pack



LUBExpert On-Guard Grease Cartridge

SI.LBX.PGC.120A-01 SI.LBX.PGC.120C-01 SI.LBX.PGC.120D-01

For SDT LUBExpert On-Guard, Perma Star Control 2.0, 120 CC, Category A (SF01), 10 Pack



LUBExpert On-Guard Coated Steel Enclosure

FU.SRL.ENC.001-01

For LUBExpert On-Guard Module Permanent, Includes hardware and accessories for basic Installation

Accessories

LUBExpert On-Guard



Cable for LUBExpert On-Guard Lubrication Drive, Straight M8 to Blunt Cut, 32.8ft./10m

FU.SRL.CABL.01.100-1 FU.SRL.CABL.01.150-1 FU.SRL.CABL.01.200-1
FU.SRL.CABL.01.300-1

For SDT LUBExpert On-Guard Lubrication Drive, Cable M8 4PF-Z, Straight Shielded



Cable for LUBExpert On-Guard Lubrication Drive, 90 Deg M8 to Blunt Cut, 32.8ft./10m

FU.SRL.CABL.02.100-1 FU.SRL.CABL.02.150-1 FU.SRL.CABL.02.200-1
FU.SRL.CABL.02.300-1

For SDT LUBExpert On-Guard Lubrication Drive, Cable M8 4PF-Z, 90 Deg Shielded



Cable Extension for SDT LUBExpert On-Guard Permanent, Straight M8 to Blunt Cut, 16.4ft./5m

FU.RSC.CABL.EXT.01-1

For SDT LUBExpert On-Guard, Cable M8 4PF-Z, Straight Shielded, One extension unit applies to all 8 cables, Maximum 4 Extensions (65.6ft./20m)



Cable Extension for SDT LUBExpert On-Guard Permanent, 90 Deg M8 to Blunt Cut, 16.4ft./5m

FU.RSC.CABL.EXT.02-1

For SDT LUBExpert On-Guard, Cable M8 4PF-Z, 90 Degree Shielded, One extension unit applies to all 8 cables, Maximum 4 Extensions (65.6ft./20m)



Cable Extension for LUBExpert On-Guard Permanent Lubrication Drive, Straight M8 to Blunt Cut, 16.4/5m

FU.SRL.CABL.EXT.01-1

For SDT LUBExpert On-Guard Lubrication Drive, Cable M8 4PF-Z, Straight Shielded, One extension unit applies to all 8 cables, Maximum 4 Extensions (65.6ft./20m)



Cable Extension for LUBExpert On-Guard Permanent Lubrication Drive, 90 Deg M8 to Blunt Cut, 16.4/5m

FU.SRL.CABL.EXT.02-1

For SDT LUBExpert On-Guard Lubrication Drive, Cable M8 4PF-Z, 90 Degree Shielded, One extension unit applies to all 8 cables, Maximum 4 Extensions (65.6ft./20m)

Accessories

LUBExpert On-Guard



SDT LUBExpert On-Guard Mobility System Trial

FS.SRL.TR.01-1

LUBExpert On-Guard Mobility System One Month Trial w/ 4 Channels, Includes On-Guard Module, Software, 4-20 True COMMONSense Sensors, Automatic Lubrication Drives, Accessories and Custom carrying case



SDT LUBExpert On-Guard Mobility System Trial

FS.SRL.TRG.01-1

LUBExpert On-Guard Mobility System One Month Trial w/ 4 Channels, Includes On-Guard Module, Software, 4-20 True COMMONSense Sensors, Automatic Lubrication Drives, Grease Cartridges, Accessories and Custom carrying case

CALIBRATE YOUR INSTRUMENT

TAKE ADVANTAGE OF OUR LIFETIME WARRANTY



Calibrations



Calibration, Inspection & Update, SDT340 Device

AC.R340

For SDT340 Device Only

Lifetime Warranty Reactivation, SDT340

AC2.R340

For SDT340, Device Must Pass Inspection Wireless,
M8 4-20mA, DC Power or Battery Power, For use
with ULTRASentry Communication Gateways



Calibration, Inspection & Update, LUBExpert Device

AC.LBXD

For LUBExpert Device Only

Lifetime Warranty Reactivation, LUBExpert

AC2.LBXD

For LUBExpert, Device Must Pass Inspection

Calibrations



Calibration, Inspection & Update, Checker Range Device

AC.CHKD

For ULTRA / LEAK / TRAP / LUBE / TIGHT / HATCH
Checker Device Only

Lifetime Warranty Reactivation, Checkers Range

AC2.CHKD

For ULTRA/LEAK/TRAP/LUBE/TIGHT/HATCH Check-
er, Device Must Pass Inspection



Calibration, Inspection & Update, RAPsody Box

AC.RAP

For RAPsody Box Only

Lifetime Warranty Reactivation, RAPsody Box

AC2.RAP

For RAPsody Box, Device Must Pass Inspection

Calibrations



Calibration, Inspection & Update, SDT200 Device

AC.R200

For LUBExpert Device Only

Lifetime Warranty Reactivation, SDT200

AC2.R200

For SDT200, Device Must Pass Inspection



Calibration, Inspection & Update, SDT270 Device

AC.R270

For SDT340 Device Only

Lifetime Warranty Reactivation, SDT270

AC2.R270

For SDT270, Device Must Pass Inspection



SonaVu Function Test and Battery Replacement

FU.SVU.FCT.001

For SonaVu Only, Li-ion



SonaVu Plus Function Test and Battery Replacement

FU.SVUP.FCT.001

For SonaVu Plus Only, Li-ion

Calibrations



Calibration and Inspection, T-Sonic1 Ultrasound Transmitter

AC.TSO1

For T-Sonic1 Only

Lifetime Warranty Reactivation, T-Sonic 1

AC2.TSO1

For T-Sonic 1, Device Must Pass Inspection



Calibration and Inspection, T-Sonic9 Ultrasound Transmitter

AC.TSO9

For T-Sonic9 Only

Lifetime Warranty Reactivation, T-Sonic 9

AC2.TSO9

For T-Sonic 9, Device Must Pass Inspection

Contact *SDT* Ultrasound Solutions

REACH US DIRECTLY

Email: HearMore@sdtultrasound.com

Website: <https://hearmore.us/>

Phone: 1 (905) 377-1313

Toll Free: 1-800-667-5325

SDT North America

Phone: 1-905-377-1313

Address: 7677 County Rd 2, Cobourg, ON, CA.

SDT United States

Phone: 1-864-568-0712

Address: US Office •203 Commerce Blvd, Anderson, SC, USA.

SDT India

Phone: +91 85 85 84 85 86

Address: 6th Floor 2 A, Aa li Awfis Rajarhat li, Premises Rajarhat, Ecospace Business Park,
Kolkata- 700156, West Bengal, India

REQUEST A QUOTE

Looking for a custom solution that fits your maintenance needs?
Contact our team today to request a quote.

About SDT

Warranty

SDT Ultrasound Solutions offers both an extended warranty and a lifetime warranty on select products. Our extended warranty ensures peace of mind with long-term protection, while the lifetime warranty is available on specific products, guaranteeing durability and reliability for the lifetime of the equipment.

Repair & Calibrations: Return your complete SDT kit or product in its original case if possible. Send your equipment to the correct SDT address or authorized distributor.

SDT-authorized repair centers will inspect all items and components upon receipt. Please allow approximately three business days to receive an estimate from the time we receive your device or component. Please allow approximately five business days from receipt of your order for our service center to complete repairs or calibration.

Once the service is finished and your equipment is shipped, you will receive an email with shipping details and a tracking number.

Services

Our skilled technicians utilize advanced ultrasound technology to perform detailed inspections, identifying potential issues before they cause downtime. This service ensures the continued reliability and performance of your equipment, allowing you to focus on your core operations without investing in ultrasound devices.

Commitment to Quality

SDT Ultrasound Solutions designs high-quality, precision-engineered products built for reliability and performance. Rigorously tested and designed to meet industry standards, our instruments deliver accurate, consistent results for predictive maintenance.

Commitment to Sustainability

SDT Ultrasound Solutions is committed to sustainability by providing technology that helps industries reduce energy waste, lower emissions, and extend equipment life. By detecting leaks, preventing failures, and optimizing maintenance practices, our solutions support a more efficient and environmentally responsible approach to reliability.

About SDT

SDT Ultrasound Solutions provides innovative ultrasound technology for predictive maintenance and condition monitoring. Our products help businesses detect issues early, reduce downtime, and optimize equipment performance. Committed to quality and reliability, we offer user-friendly tools designed to support proactive maintenance and enhance operational efficiency.

Index

A

Accessories – general 41–57
AC1 accelerometer 28
Adapters, lube 42–43
Airborne sensors 27
Audio accessories 43–44

B

Batteries 53
Battery charger – SDT8 53
Bluetooth headset transmitter 44
Branded leak tags 52

C

Calibration services 58–62
Carrying cases – SDT, Checker 46–48
Cables – COMMONSense 24
Cables – device to sensor 34–37
Cables – junction box 38–40
Checker range devices 10–11
COMMONSense sensors 22–23
Custom solutions / quote 63

D

Data collectors 6–19
Device holsters 53–54

E

Extension poles 45–46

G

Grease guns / cradles 49

H

Headphones 43

J

Junction boxes 40

K

Key activations – Vigilant 14

L

LeakReporter 52
LUBExpert systems 8
LUBExpert On-Guard 9, 55–57

M

Magnetic mounts 42–43
Mobility systems 9, 57
Mounting pads 43

N

Needle extensions 46

O

On-Guard modules 55–57

P

ParaDish sensors 27, 32
Protective holsters 53

R

RAPsody signal simulator 46
RS1 sensors 30–32
RS2 sensors 26–27, 29
Rubber holsters 54

S

Sensor parts (tips, caps, adapters) 44–46
Sensors 26–32
SonaVu+ 12–13, 49–50
SonaVu 50–52
Software – UAS3 19
Support 63

T

T-Sonic transmitters 33
Training & certification 20

U

ULTRAChecker 10
ULTRASentry 13
USB memory / cables 24, 34–39

V

Vigilant monitoring 14

W

Warranties 59–62