

SONAVU+

BRING RELIABILITY INTO **FOCUS**



THE **NEXT GENERATION** OF **ACOUSTIC IMAGING**

For millennia humans have relied on a keen sense of sight and sound to stay alert of impending danger. Those same senses warn us when our assets are about to fail.

SonaVu+ harnesses these senses by visualizing ultrasound and finding compressed air, gas, and vacuum leaks, electrical faults, mechanical anomalies and other defects.

SONAVU+ BRINGS NEW FUNCTIONALITY TO ACOUSTIC IMAGING

SonaVu+ takes acoustic imaging further than ever before, boasting improvements to sensitivity, detection distance, and durability, helping SonaVu+ thrive in tough industrial environments. And with a more accessible price, advanced acoustic imaging is now within reach for more reliability teams.

Long-Distance Optical Camera with Zoom

Capture sharp, detailed images with high-resolution optics and smooth two-finger zoom. See defects clearly and deliver reports that stand out.

On-Screen Spectrum & PRPD Charts

Turn invisible risks into visible insights. Real-time spectrum and PRPD charts bring clarity and confidence to electrical inspections.

Heterodyned Audio with Bluetooth

Hear what you see. Stream converted ultrasound to Bluetooth headphones for instant, real-time confirmation of anomalies.

5-Hour Battery Life

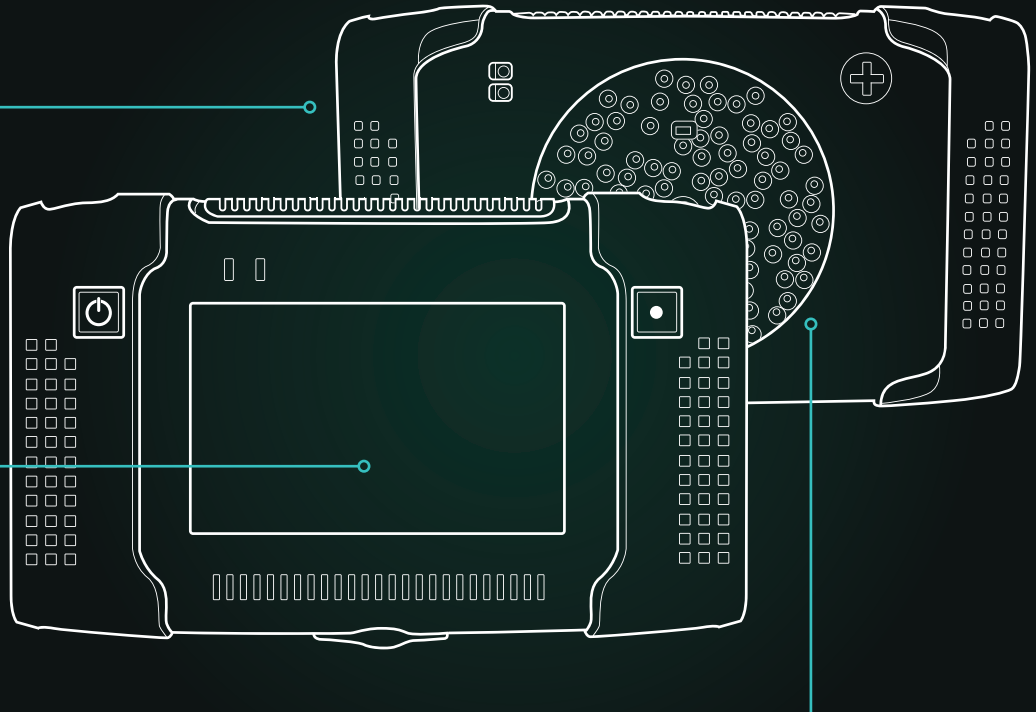
Stay powered through demanding surveys. A rechargeable battery gives you up to 5 hours of uninterrupted performance.

Multi-Point Defect Detection

See the bigger picture. The 112-sensor array pinpoints multiple leaks or discharges at once, cutting survey times dramatically.

112 Digital Mems Sensors

Find defects small and far. Detect leaks down to 0.02 bar and 38 cc/min and visualizes defects up to 220 m away.

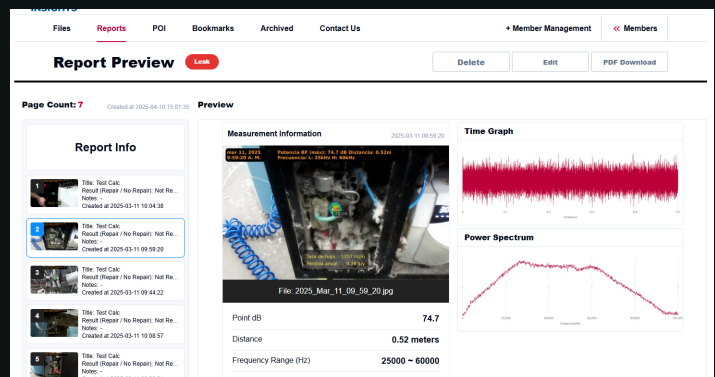
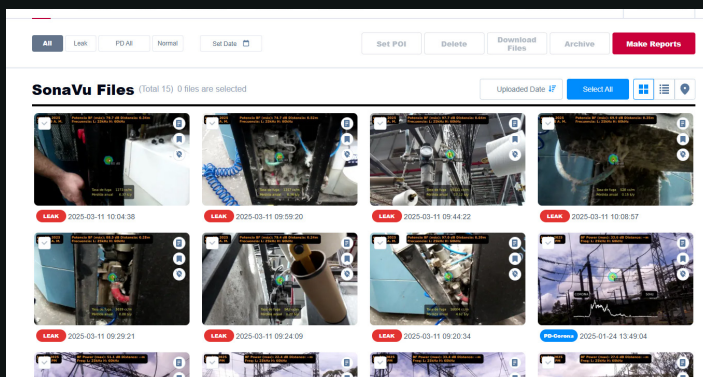


SonaVu InSights™ Reporting Application

The SonaVu InSights™ app transforms every inspection into a professional and actionable report. Every finding is documented with images and video, giving teams a clear visual record of leaks, discharges, or anomalies.

Defects are automatically ranked by severity and impact, while energy losses or downtime risks are calculated to prove ROI. All results are stored in one cloud-based hub, making them easy to access, organize, and track over time.

Reports can be shared across maintenance, reliability, and management teams with a click, ensuring alignment and driving action across the organization.



SMARTER REPORTING FEATURES

Instant Report Generation

Create professional reports in minutes with captured images, video, and notes from your SonaVu+ inspections.

Centralized Data Management

Store and organize ultrasound and acoustic imaging results in one hub for traceability and long-term reliability tracking.

Cost Impact Analysis

Estimate energy losses (air/gas leaks) or potential downtime costs (electrical/mechanical faults) to prove ROI quickly.

Cloud-Based/Browser Accessible

Access your inspection data from anywhere, with no software installation required.

Repair Prioritization

Rank defects by severity and impact, helping teams focus first on the highest-value repairs.

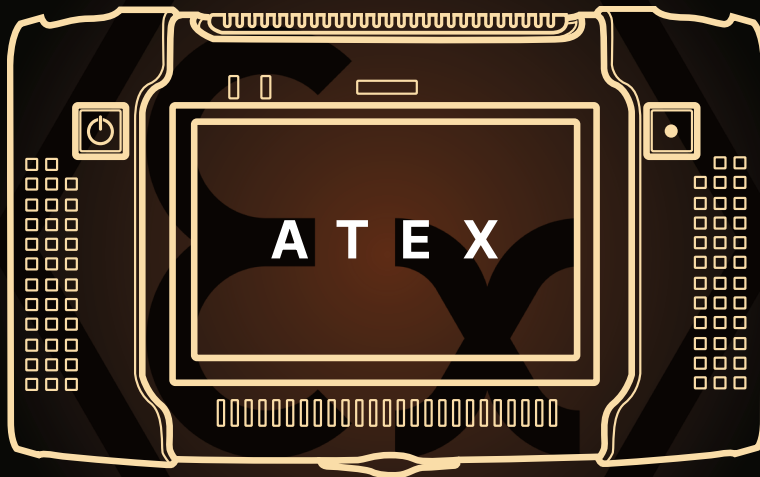
Easy Sharing Across Teams

Export and share reports instantly with maintenance, reliability, and management teams to drive action.

BUILT FOR **HAZARDOUS** ENVIRONMENTS

Safety is always the top priority, but especially in industries where flammable gases, vapors, or dust are present. Without proper certification, many tools can't be used, leaving critical assets unmonitored.

SonaVu+ ATEX is certified for use in Class I, Division I hazardous locations, giving reliability teams the confidence to inspect safely and maintain visibility in the most challenging environments.



ALIGNING WITH **NFPA 70B** STANDARDS

The NFPA 70B Standard for Electrical Maintenance emphasizes proactive inspections to prevent failures, reduce risks, and extend the life of critical equipment.

Ultrasonic imaging is highlighted as a proven method to identify issues like partial discharge, arcing, tracking, and corona before they escalate into costly downtime or safety hazards.

With SonaVu+, inspectors can carry out these inspections safely and efficiently, capturing the diagnostic detail needed to document findings and stay aligned with NFPA 70B guidance.

NFPA
70B

Standard for
Electrical Equipment Maintenance

2023



Copyright © 2023, the content and NFPA's logo are trademarks of NFPA. All rights reserved. NFPA is a registered trademark of NFPA. NFPA is a registered trademark of NFPA. NFPA is a registered trademark of NFPA.

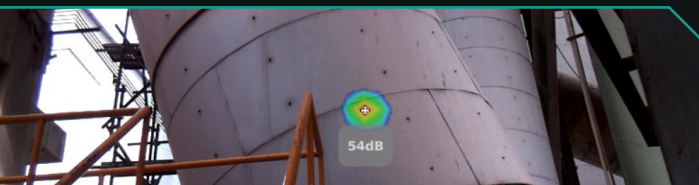
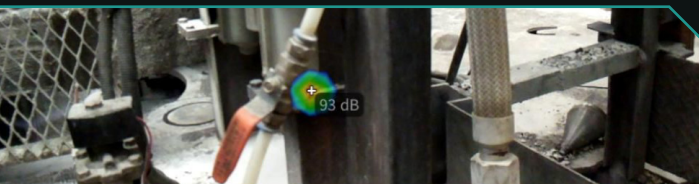
APPLICATIONS FOR ACOUSTIC IMAGING

ELECTRICAL SYSTEM RELIABILITY

Issues like arcing, tracking, and corona discharge generate high-frequency sound, often undetectable by the human ear. Acoustic imaging inspection makes these faults visible, allowing maintenance teams to pinpoint and address them before they escalate.



LEAK DETECTION



COMPRESSED AIR:

Acoustic imaging makes locating and visualizing leaks in real time easy... Even in noisy environments. When leaks are identified promptly, energy costs go down, system efficiency goes up, and compressed lifespan is extended.

FUGITIVE EMISSIONS:

Fugitive emissions threaten safety and compliance. But locating them is challenging due to low pressures and hazardous environments. SonaVu+ delivers sensitivity, range, and ATEX availability for safe, reliable inspections.

VACUUM PRESSURE:

Vacuum leaks create system inefficiencies, energy waste, and can potentially damage products and equipment. Acoustic imaging is a fast and reliable way to locate these leaks by visualizing the high frequency sounds they produce.

MECHANICAL

Acoustic imaging inspection is a powerful tool for monitoring critical drivetrain components such as couplings, conveyors, belts, chains, and drives. These assets often operate under heavy loads and are prone to wear, misalignment, and lubrication issues, which generate high-frequency sound as friction and impact increase.



PRODUCT SPECIFICATIONS:

TECH SPECS

Mic channels	112 MEMS
Freq. range	2 kHz – 100 kHz
Dynamic-range (min. threshold)	1.90 – 20.10 dB (across 2 – 100 kHz)
Detect distance	0.3 – 150 m
Frame rate	25 FPS
Display	5" LCD (800×480) / output up to 1024×600
Digital zoom	3x Digital
Internal storage	21 GB (≈ 8,400 JPEGs / 20hrs video) 30min Max Video
External storage / Ports	USB-C / Bluetooth / HDMI / USB-C / 3.5mm
Formats	JPG, MP4, WAV

BATTERY / RUN TIME

Battery	48.24 Wh → 5 h runtime
Charging / Power	USB-C / BT 5.0; wired or wireless audio

PHYSICAL SPECS

IP rating	IP40
Dimensions (L × W × H)	237×146×56 mm
Weight	1.1 kg
Temp. (op/storage/charge)	-20 – +50 °C

MINIMUM LEAK THRESHOLD

Distance	1m (1.09 yards)
	0.02 bar (0.29 PSI)
	38 cc/min (0.00116 CFM)

ACOUSTIC MEASUREMENTS

Detection Threshold	2kHz ≥ 2.34 dB SPL
	20kHz ≥ 2.22 dB SPL
	40kHz ≥ 1.90 dB SPL
	55kHz ≥ 1.22 dB SPL
	77kHz ≥ 1.84 dB SPL
	100kHz ≥ 20.10 dB SPL

MISC.

Certifications	C1D1 ATEX, EMC, FCC, CE, KC
	II 3G Ex ic IIC T5 Gc
Software/reporting	InSights™; PRPD, GIS-tagging, Multipoint Detection

US Office:
203 Commerce Blvd,
Anderson, SC
1-864-568-0712
HearMore@sdtultrasound.com

Canadian Office:
7677 County Road 2
Cobourg ON, K9A 4J7
1-800-667-5325
HearMore@sdtultrasound.com

Indian Office:
2A, 6th Floor, Ecospace Business Park, AA II
Kolkata, West Bengal, 700156
+91 80 25043142
HearMore@sdtultrasound.com